



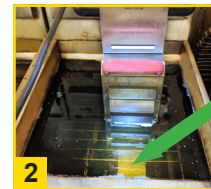
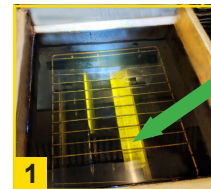
## Standard Operating Procedures - VITO oil filter system

### When to use:

After Breakfast	After Lunch	After Dinner
✓	✓	✓

### How to use:

1. Plug in system, place into deep fryer on fryer rack. Fryer may stay on.
2. Make sure system has a secure stand and is placed above the widest gap between heating elements (see pictures 1 & 2).
3. Push power button. System filters oil for 4.5 minutes, no supervision needed.
4. Move system into next fryer. Same procedure as in 2,3.
5. When finished let remaining oil in the system drip back into fryer and move it into drip tray for storage.

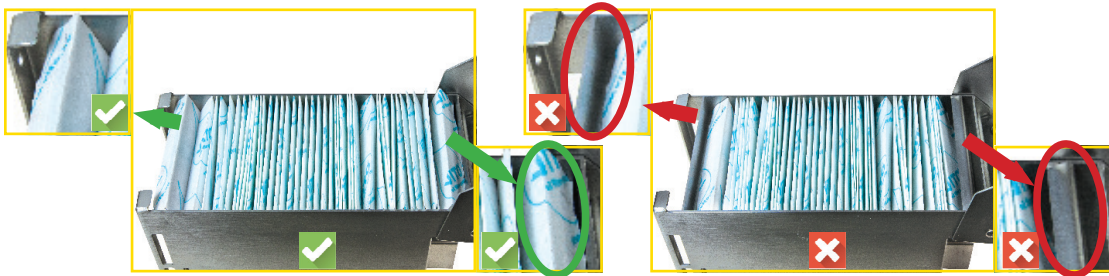


### How to clean:



Note: Please only clean **cooled down** system. DO NOT clean Electrical unit in Dish washer - Use a damp towel! Make sure to remove metal screens for cleaning. Cleaning only necessary when filter changed. To minimize carbon build up, please boil out pump filter unit once every two weeks.

### How to insert filter paper:



Note: To maximize filter life, cut filter in half. Filter paper must be inserted overlapping on both sides.

### Filter paper life:

Use one half of the cut filter for the filtration of all three fryers. Replace afterwards!

Note: Please change filter paper only when system is cooled down to avoid burning injuries.